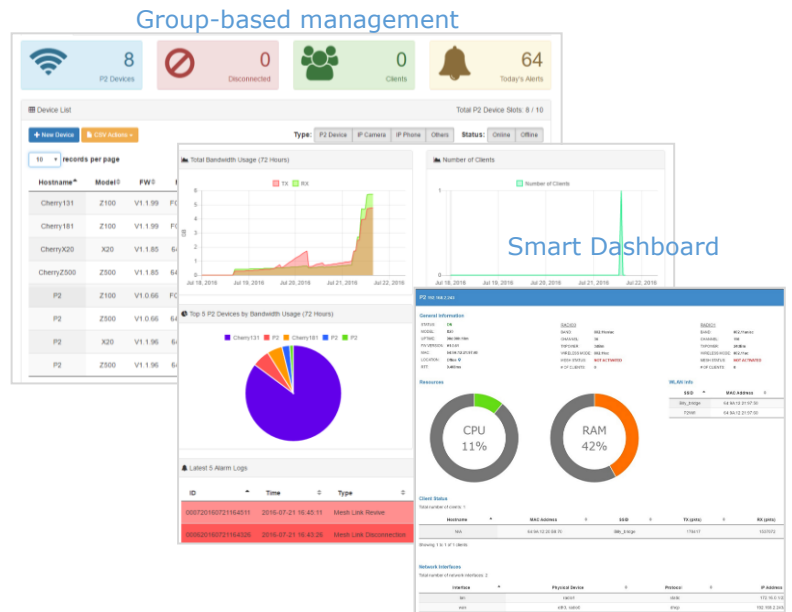


Highlights

- Centralized system monitoring
- Integrated network management
- Real-time visual traffic analysis
- **SmartMesh** monitoring on mesh link status and client traffic
- Group-based management
- **Smart Dashboard** showing data per P2 device
- Network mapping
- Customizable logging and reporting system



Overview

The MeshProvision Server is a web-based centralized network provisioning and management software specially designed for P2 wireless network. It provides a general overview of P2 devices and the network through well-formatted, organized and analytical client and device data showcase.

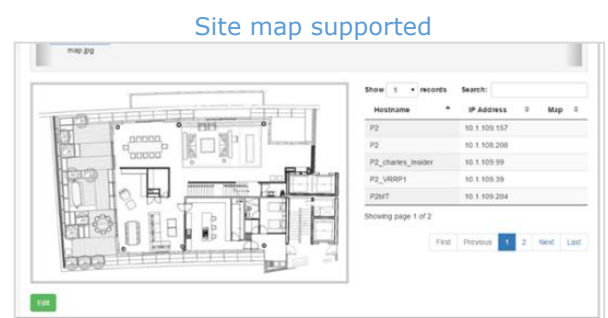
Conveniently provisions and configures all the P2 devices in the network through the efficient group-based configuration feature. Broadcast configuration to multiple devices in one go for centralized management of large scale network deployments.

All P2 devices are organized in groups for easy management of networks of any size. Locate every P2 device on your customized maps. Visualize the mesh connection status of different mesh backbone radios through the **SmartMesh** monitoring page that presents a graphical view of mesh link health at a glance. Access P2 device information summary through the **Smart Dashboard**.

The traffic monitoring feature provides real-time network insight on a per-user or per-device basis, assisting network administrators in achieving better network management by optimizing both the end-user experience and network security.

Product Supported

- Z100
- Z500
- X20 MeshRanger
- X30 MeshRanger Series
- Other P2 Devices





Specifications

Product Name	MeshProvision Server Standard	MeshProvision Server Basic
Recommended Minimum Hardware Platform# (Provided by Customer)	Intel i7 PC, 32/64-bit CPU, 3GB RAM, Hardware RAID 1TB HDD	Intel i5 PC, 32/64-bit CPU, 3GB RAM, 500GB HDD
Operating System	Linux Ubuntu (Included in MeshProvision Server Software Package) or VMware Player on Windows (OS Provided by Customer)	
Centralized SmartMesh Network Monitoring	Yes	
Initial Number of P2 Devices Supported (Expandable in Steps of 10 or 100 P2 Devices, Hardware Dependent)	500	10
Features		
Fault Management	<ul style="list-style-type: none"> 3rd-Party Device Monitoring (Camera, Router, SC and AC etc.) Alarm Log and Email Alert Reporting 	
Configuration Management	<ul style="list-style-type: none"> P2 Device Firmware Upgrade MeshProvision Server Software Upgrade Group-Based Configuration* 	
Administration Management	<ul style="list-style-type: none"> User Account Management Graphical Location-Based Monitoring Maximum Client per SSID Resources Info Monitoring (CPU Usage, RAM Usage) Group-Based Home Page (Device List, Total Bandwidth Usage, Top 5 Devices by Bandwidth, WLAN Info, Latest 5 Alarm Logs) Per Device Smart Dashboard (P2 Device Information, Resources, WLAN Info, Client Status, Network Interface, Latest 5 Alarm Logs) SmartMesh Monitoring System Event Log and Reporting 	
Performance Management	<ul style="list-style-type: none"> Traffic Monitoring (Per User/ P2 Device) Statistics Report: SSID/Group (Resources, Client Status, Throughput and Alarm etc.) 	
Security Management	<ul style="list-style-type: none"> Hybrid PSK2/ User Name Password RADIUS Authentication (Local/ Proxy) Secured Remote Command Authentication 	

* Will be available in the future

Customer may need to upgrade the server as the number of P2 Devices or site beyond the initial capacity.